

XBACK II

THE XBACK II™ TLSO

MODEL T100

L0456 APPROVED

The first brace developed by XBACK, the XBACK II™ features a ground-breaking design with no hard sternal pads and a unique cutout to reduce spinal pressure and increase airflow.

INDICATIONS:

- Compression Fractures
- Severe Degenerative Disc Disease that Causes Kyphosis
- Post-Surgical Stabilization
- Chronic and Acute Strain with Associated Lumbar Instability
- Mechanical Back Pain
- Scoliosis

THE INNOVATION OF XBACK



Easy to Fit

Most braces on the market require complicated multiple fitting sessions. Not XBACK. Our line of back braces was designed with special heat moldable panels that can be easily fit to any patient in just one session. Fit it once, and it fits right. Equally easy for patients to take on and off, the comfortable, lightweight braces encourage compliance with treatment protocols.



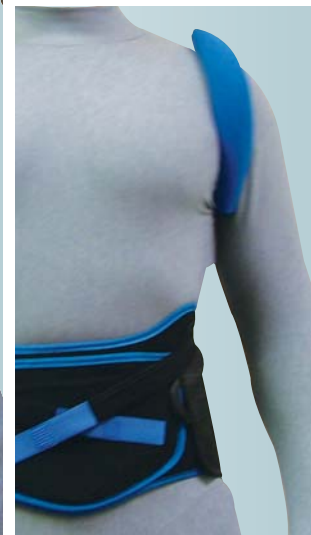
Room to Breathe

Developed with dynamic force technology, XBACK braces offer constant compression and support without sacrificing comfort. While the brace stays in constant contact with the patient's body, every patient-facing surface features specially designed moisture-wicking materials to maximize comfort.



Ergonomic Design

Every XBACK brace features a special ergonomic design to promote a better fit. A special anatomical curve follows the patient's body to prevent the common problem of riding up, and the streamlined XBACK construction allows the braces to be easily and comfortably worn under most clothing.



SIMPLY INNOVATIVE BRACES

XBACKBRACE.COM



XBACK II: Sizing Chart (inches)		
Small	Waist	19-30
Medium	Waist	31-35
Medium Plus	Waist	32-38
Large	Waist	36-40
X-Large	Waist	41-45
XX-Large	Waist	46-55
XXX-Large	Waist	56-70